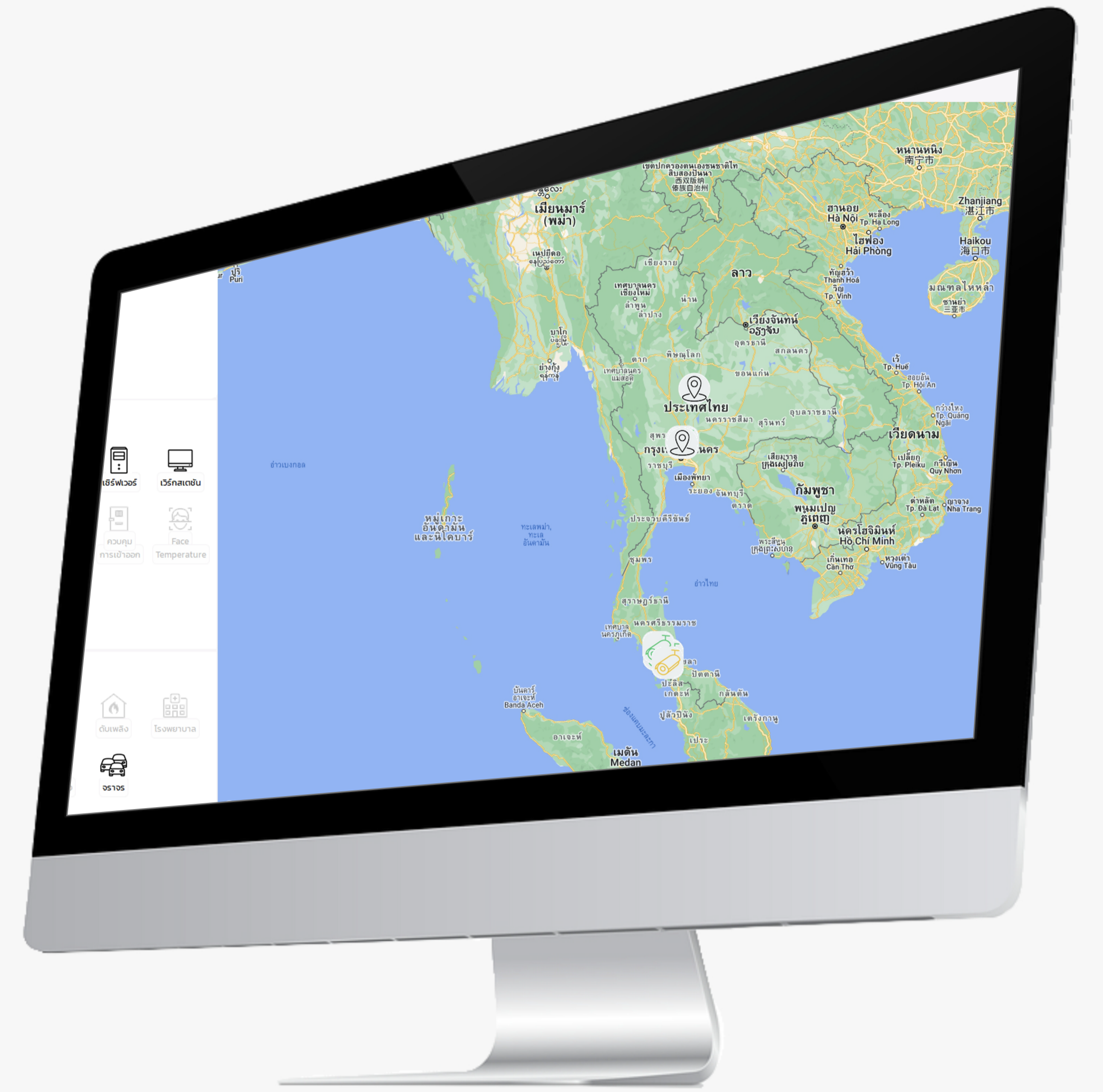


LYT-X

CSIM

Converged Security Information Management



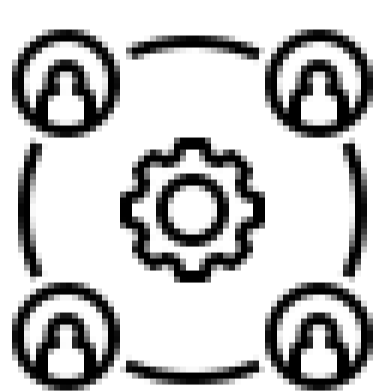
LYT-X is a provider of Converged Security & Information Management solutions. We've helped organizations streamline their security operations to reduce risk, manage security events in real-time and respond to incidents more effectively. Simply put, we make situation management simple.



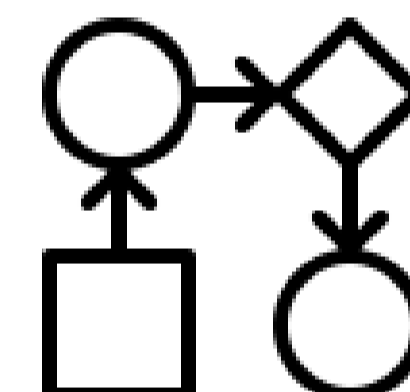
Simplifies situation management
improves situational awareness



Standard library of
Integrations



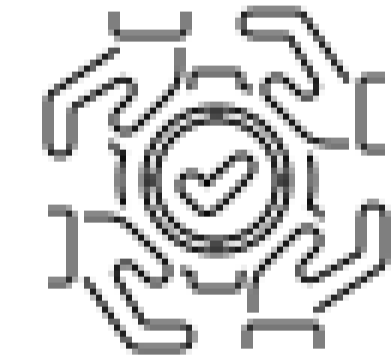
Workforce Multiplier



Information Workflows



Protects + tracks business
assets



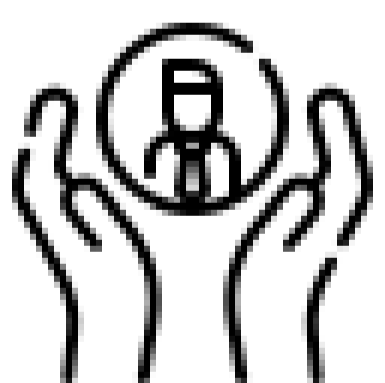
Improves collaboration
resource sharing



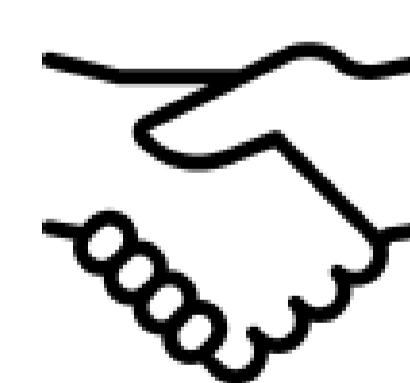
Reduces operational costs



Resolves incidents faster

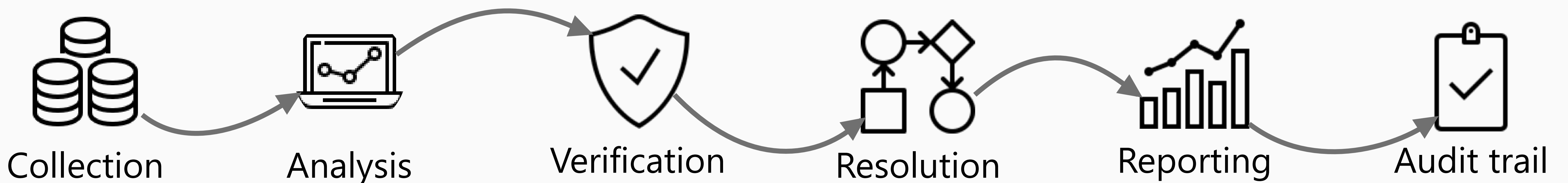


Facilitates interoperability



Trusted Partner

Benefits your company can get from a CSIM



Technical Specifications

Integration Standard

- API (JSON, SOAP, RESTful)
- MQTT, SNMP, POP3, SIP
- BACnet, OPC, Modbus, SQL, Log File
- RTSP, ONVIF over RTSP

Google Map

- Marker (Icon Symbole) and Traffic display
- KMZ support
- Zoom In/Out
- Location and marker search
- Icon action controls the computer, views the camera and sends API

Situation Management

- Situation alert display on google/e-map
- Display information (time, location, situation, and IoT device)
- Provides standard operating procedures (SOPs), step-by-step instructions based on best practices, and an organization's policies

AI Metadata Integration

- Facial Recognition keeps data in time, face capture, ID and status (VIP/white/black list)
- LPR Recognition keeps data in time, LPR capture, license plate, province status (VIP/white/black list)
- Objects Attribute Detection keeps data in car(type, color), people(shirt/pants color)
- Can search metadata information, cameras, and playback video from the camera

Monitor System

- Camera
- Network
- DVRs, NVRs, VMSs
- IT infrastructure (server, peripherals...)

E-Map

- Icon Symbole Multi-level maps, Zoom In/Out
- Line, Box, Ellipse, Image, Text, Ruler, Angle, Polyline, Memo and Line label support
- Location and marker search
- Icon action controls the computer, views the camera and sends API

Standard Operating Procedures (SOPs)

- Display step-by-step instructions
- Display and search phone book relative to the situation
- Display history SOPs relative to the situation
- Notifications to email, line app, sip protocol, and virtual matrix monitor

User Management

Able to set usage rights for each user to be different
Username and password protection

LYT-X is designed to be the central part of operating personnel's decision-making process. By increasing holistic awareness of their surroundings, the platform creates a powerful tool that significantly improves effectiveness and responsiveness beyond traditional video security systems.

